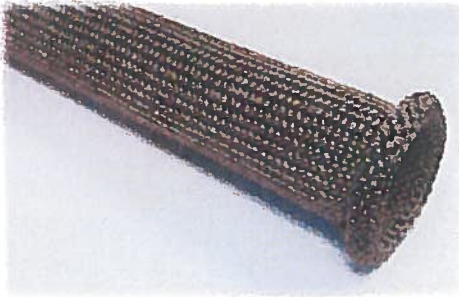


BASALT SLEEVES

HIGH TEMPERATURE KNITTED BASALT INSULATION SLEEVES



- Protection up to 750°C/1382°F
- Exceptional thermal insulation
- Available in precut or continuous lengths up to 100 feet (30.5 meters)
- Expandable and durable for ease of assembly
- Fits a wide range of pipe/tube geometries

Available Sizes (ID): Up to 5 1/2" (140mm)

This high temperature Knitted Sleeve is constructed of Basalt yarn, which provides excellent thermal protection and will withstand continuous exposure to temperatures of up to 750°C/1382°F. Typical applications include automotive, heavy-duty truck, and bus exhaust tubes and pipes and high temperature industrial applications to protect hoses and cables. When installed on vehicle exhaust tubes and pipes, our Basalt Sleeve facilitates an increase in the efficiency of a vehicle's emission control system through the retention of high temperatures as gases flow through the exhaust system. Moreover, the Sleeves reduce radiation of heat to adjacent components to preserve the integrity of these components.

The durable, knitted, and lightweight design is very flexible, which enables ease of assembly over tubes and pipes with bends, flanges, and a wide range of geometries. The dense single wall construction provides optimal coverage and prevents snagging or tearing during assembly.

The Sleeves are available in precut or continuous lengths of up to 100 feet (30.5 meters). Consequently, we can easily, and without tooling, optimize a design to the user's specification or the user has the flexibility of purchasing the product in continuous lengths and cutting sleeves to exact lengths to accommodate specific design and production needs.

PHYSICAL PROPERTIES	
Melting temperature	1450°C/2642°F
Continuous operating temperature	750°C/1382°F
Maximum operating temperature	980°C/1796°F
Minimum operating temperature	-260°C/-436°F
Thermal conductivity	0.031-.0.038 W/m K